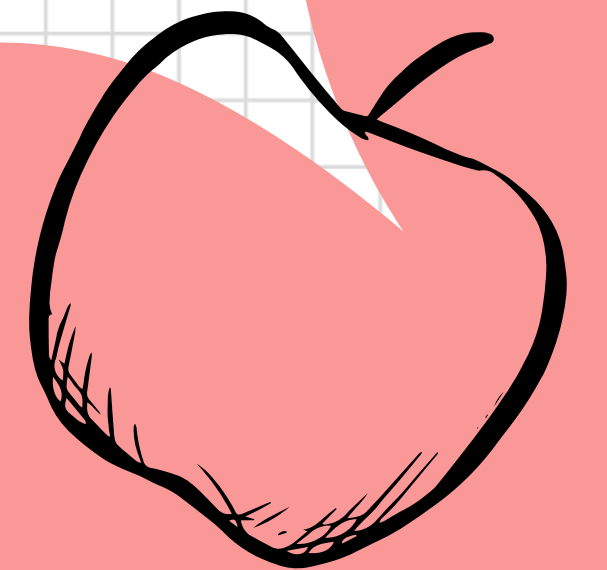
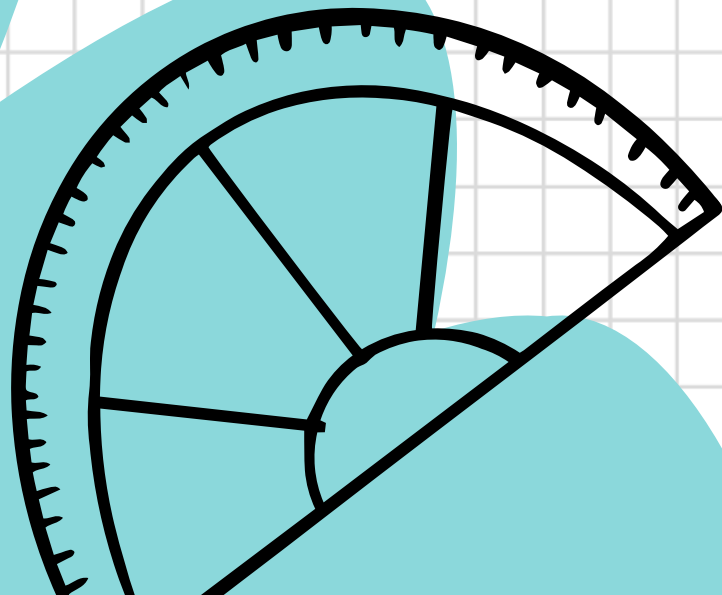




Welcome to  
Catshill Middle School

Year 4 transition to year 5



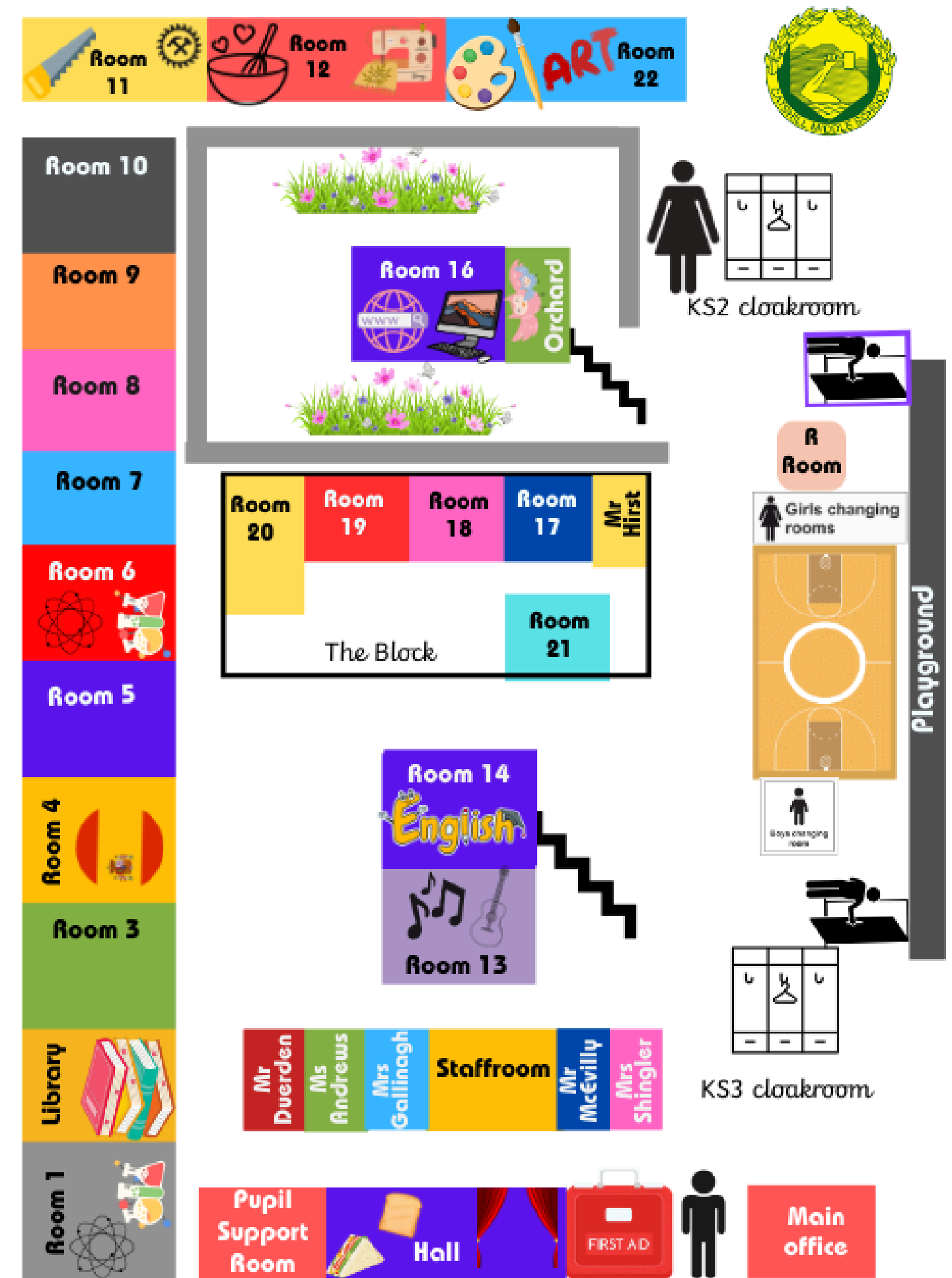
# What will be different?

- The size of the school is over 400 pupils
- You will not be in the same classroom all day
- Specialist teachers; Science, Art, Spanish, Music, DT, etc

# What will be the same?

- Kind, caring and helpful teachers
- Break and lunchtime

Remember everyone is here to help and we want you to have the best start at Catshill Middle School; students and teachers!



# School background

- Catshill Middle School is often referred to as CMS.
- It has been a school for 85 years!
- Year 5-8
- Over 400 students
- We promote challenging you and to have high expectations of you and your work to be the best you can be!



Line ups	8.45am
Registration	8.45-8.55am
Lesson 1	8.55-9.55am
Lesson 2	9.55-10.55am
AR/Assembly	10.55-11.20am
Break	11.20-11.35am
Lesson 3	11.35am-12.35pm
Lunch	12.35-1.20pm
Lesson 4	1.20-2.20pm
Lesson 5	2.20-3.20pm

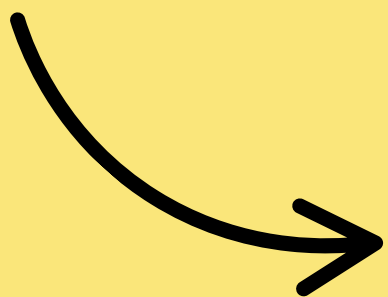
# The School Day



Lesson timings

Lesson timings

Example timetable



	MON	TU	W	TH	F
PERIOD 1	MATHS ROOM 20 	MATHS ROOM 20 	MATHS ROOM 20 	MATHS ROOM 20 	ENGLISH ROOM 17 
PERIOD 2	ENGLISH ROOM 17 	RE ROOM 13 	ENGLISH ROOM 17 	ENGLISH ROOM 17 	GEOG ROOM 17 
FORM	FORM TIME				
	BREAK				
PERIOD 3	MATHS ROOM 20 	ENGLISH ROOM 17 	DT ROOM 12 	PE GYM/FIELD 	SCIENCE ROOM 6 
	LUNCH				
PERIOD 4	LIFE SKILLS ROOM 17 	MATHS ROOM 20 	MUSIC ROOM 13 	SPANISH ROOM 4 	PE GYM/FIELD 
PERIOD 5	HISTORY ROOM 17 	SCIENCE ROOM 6 	COMPUTING ROOM 16 	ART ROOM 22 	ENGLISH ROOM 17 

# Your new classrooms

- Working walls
- Some lessons classroom based
- Others will be with specialist subject teachers



## Outside the classroom

- We have a wide range of clubs and activities available before and after school as well as at lunchtime
- We like to celebrate your achievements outside of school within school during our Celebration assembly, so bring in any medals, rosettes or achievements for us to share!



# Lunchtime


- Longer lunchtime when you first start
- Different sittings depending on year group
- Hot and cold lunches available and you can bring your own to eat in the dining room
- KS2/KS3 separate playground zones
- Weather allowing field days



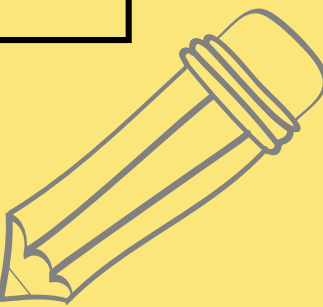


# EXTRA CURRICULAR



	MONDAY	TUESDAY	WEDNESDAY	THURSDAY	FRIDAY
Lunchtime 12.35-1.10pm	Film club	Games club	Choir (before school 8am)		Keyboard club
After school 3.20pm	Enterprise club	Dodgeball	Street dance Drama club	KS2 netball	

We also offer a SATS Maths Club for year 6 in the run up to SATS



# Library and Reading Culture

- We love books at CMS!
- Books based off your reading age
- Daily AR sessions
- Competitions



# Houses and Praise points

- We have 4 different houses
- Praise points go towards your house and your tutor group
- We use Epraise for praise points
- Can be spent on activities and rewards throughout the year
- We also use epraise to communicate messages home
- Set homework and computer based classwork
- Sign up for activities and clubs

